

# MERCURY FUNCTIONAL TESTING: MERCURY QUICKTEST PROFESSIONAL

Mercury QuickTest Professional™ is an advanced automated testing solution for building functional and regression test suites. It captures, verifies, and replays user interactions automatically, while providing advanced functionality for tester collaboration.

Mercury QuickTest Professional provides the industry's best solution for functional and regression test automation for every major software application and environment, including next-generation development technologies such as Web Services, Macromedia Flex, .NET, J2EE, and ERP/CRM applications.

Mercury QuickTest Professional offers a fresh approach to automated testing that deploys the concept of Keyword-Driven testing to radically simplify test creation and maintenance. Unique to Mercury QuickTest Professional's Keyword-Driven approach, testers can select to build test cases by capturing flows directly from the application screens using robust capturing technology (record/replay). In addition, power users will find full access to the underlying test and object properties through an integrated scripting and debugging environment that is round-trip synchronized with the Keyword View.

With this offering, your QA organization can:

- Empower the entire team to create sophisticated test suites with minimal training.
- Ensure correct functionality across all environments, data sets, and business processes.
- Fully document and replicate defects for developers, enabling them to fix defects faster and meet production deadlines.
- Easily regression-test ever-changing applications and environments.
- Help the organization deliver quality products and services, and improve revenues and profitability. Enable tester workgroups to share automated testing assets across teams.

## HOW IT WORKS

Mercury QuickTest Professional allows even novice testers to be productive in minutes. You can create a test by simply declaring the test steps using the script-free Keyword View. QuickTest Professional also enables you to capture test steps via an integrated Record capability. The product documents each step in plain English, and combines this with an integrated screenshot via the ActiveScreen.

Unlike traditional scripting tools that produce scripts that are difficult to modify, Mercury QuickTest Professional's Keyword-Driven approach lets you easily insert, modify, data-drive, and remove test steps.

Mercury QuickTest Professional handles new application builds. When an application under test changes, such as when a "Login" button is renamed "Sign In," you can make one update to an XML-based Shared Object Repository (within the new Object Repository Manager), and the update will propagate to all tests that reference this object. You can publish test scripts to Mercury Quality Management, enabling other QA team members to reuse your test scripts, eliminating duplicative work.

Mercury QuickTest Professional supports functional testing of all enterprise environments, including Web Services, Windows applications, web (Internet Explorer, Firefox, Netscape), .NET, Java/J2EE, SAP, Siebel, Oracle, PeopleSoft, Visual Basic, ActiveX, mainframe terminal emulators, and Macromedia Flex.

## DESIGNED FOR WORKGROUP COLLABORATION

Mercury QuickTest Professional 9 has been designed for test automation

collaboration among tester workgroups. It includes a new technology for managing application definitions or objects in the new Object Repository Manager. Based on an open XML format, the Object Repository Manager enables QuickTest Professional users to collaborate and share application object definitions. QuickTest Professional keeps object-level changes synchronized among users throughout test creation efforts. In addition, it now offers the ability to define object repositories before an application is available to Quality Assurance.

In addition, users can share function libraries, application asset definitions, and data-driven spreadsheets across tester workgroups.

### MERCURY FUNCTIONAL TESTING

Mercury Functional Testing™ combines Mercury QuickTest Professional and Mercury WinRunner® into a single integrated solution. Functional Testing leverages the integration between WinRunner and QuickTest Professional, where each product can call scripts of the other, and test results are reported into a common reporting interface.

### MERCURY BUSINESS PROCESS TESTING

Mercury Business Process Testing™ is a complete system for functional test case design for both automated and manual testing. Business Process Testing enables non-technical subject-matter experts to become an integral part of the quality optimization process, automates the creation of test-plan documentation, and streamlines test maintenance for application change.

Mercury Business Process Testing reduces the overhead for automated test maintenance and combines test automation and documentation into a single effort. It enables subject-matter experts and business analysts to measure the quality of application deliverables from abstract business definitions defined within the Business Process Testing framework.

Mercury Business Process Testing also improves productivity by enabling business analysts and quality engineers to collaborate effectively. With

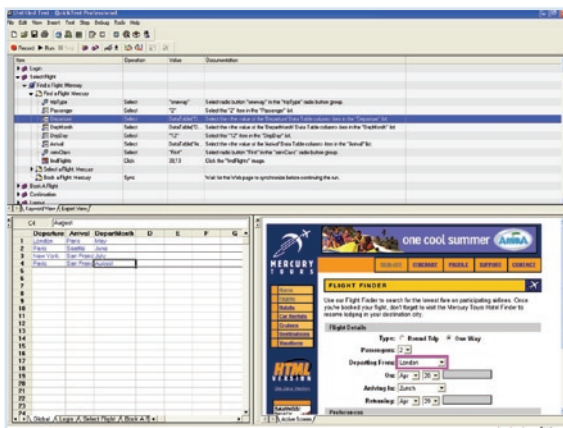
this role-based solution, subject-matter experts focus on creating high-level test flows that mirror actual business process, while quality engineers concentrate their efforts on areas that enable automation.

### PART OF MERCURY QUALITY CENTER

Mercury QuickTest Professional is part of Mercury Quality Center™, an integrated set of software, services, and best practices for automating key quality activities, including requirements management, test management, defect management, functional testing, and business-process testing.

### FEATURES AND BENEFITS

- Helps provide immediate ROI through industry-leading ease of use and pre-configured environment support.
- Operates stand-alone, or integrated into Mercury Business Process Testing and Mercury Quality Center.
- Enables collaboration between workgroups, with shared function libraries, robust object management, and flexible asset storage within Mercury Quality Center.
- Features next-generation “zero-configuration” Keyword-Driven testing technology – allowing for fast test creation, easier maintenance, and more powerful data-driving capability.
- Identifies objects with Unique Smart Object Recognition, even if they change from build to build, enabling reliable unattended script execution.
- Handles unforeseen application events with Recovery Manager, facilitating 24x7 testing to meet test project deadlines.
- Collapses test documentation and test creation to a single step with Auto-documentation technology.
- Easily data-drives any object definition, method, checkpoint, and output value via the Integrated Data Table.
- Provides a robust, highly configurable IDE environment for QA engineers.
- Preserves your investments in Mercury WinRunner test scripts, by leveraging TSL assets from Mercury QuickTest Professional/WinRunner integration.
- Rapidly isolates and diagnoses defects with integrated reports that can be exported to XML and HTML formats.
- Enables thorough validation of applications through a full complement of checkpoints.
- Provides Unicode support for multilingual application testing.



Using Mercury QuickTest Professional's Keyword Views, Auto-documentation, and Active Screen, you can create and modify test scripts without having to write a single line of code.



Mercury is the global leader in business technology optimization (BTO). We are committed to helping customers optimize the business outcome of IT. [WWW.MERCURY.COM](http://WWW.MERCURY.COM)