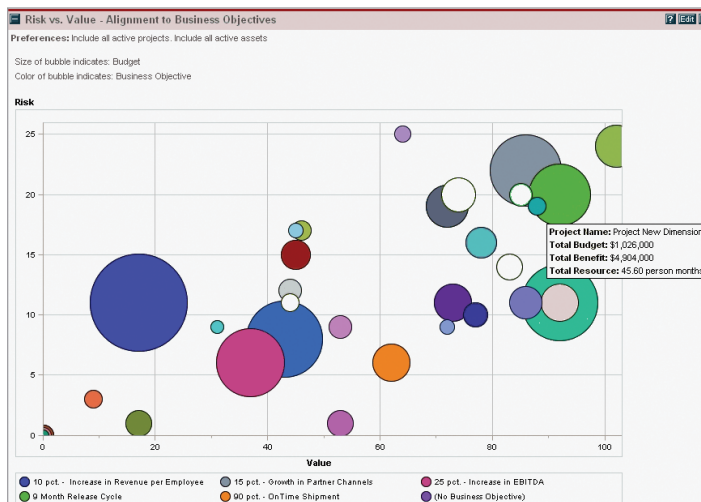


MERCURY PORTFOLIO MANAGEMENT

Mercury Portfolio Management™ enables you to govern your portfolio of IT projects, applications, and opportunities in real-time with effective collaborative processes.

Today, the competition for IT resources is fiercer than ever in most companies. How can organizations prioritize the needs of different business units and other internal customers? How can they make the tough decisions about what to take on? And how do they share those decisions with the business leadership?

Mercury Portfolio Management gives you the real-time governance process you need for effective portfolio management. From the existing applications that run your business to the new initiatives that grow and transform your business, Portfolio Management is the only application that lets business and IT stakeholders collaboratively govern your entire IT portfolio, with “apples-to-apples” comparisons and multiple levels of input, review, and approval.



Mercury IT Governance Dashboard displays portfolio information, giving IT and business leaders real-time views of portfolio performance to aid in decision making.

Portfolio Management gives you the information and process to make effective portfolio decisions. From proposal initiation, justification, and review to project initiation, execution, deployment, and benefits realization, Portfolio Management uses automatic real-time updates and an enforced process to keep stakeholders involved.

Unlike other systems, Portfolio Management provides real-time visibility into resources, budgets, costs, programs, projects, and overall IT demand – without costly integrations to multiple data sources or fire-drill exercises to update the data. You get the clearest view of how to deliver maximum value to the business, a process at the heart of business technology optimization (BTO).

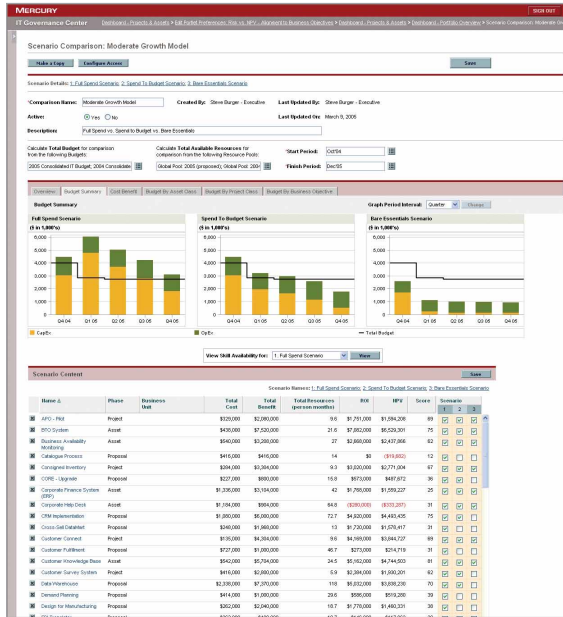
Enforce and Automate Governance Processes

Mercury Portfolio Management provides you with the processes required for effective portfolio management. Individual and team involvement is built (digitized) into the portfolio management process – ensuring and enforcing that the right people are involved at the right time. For example, the portfolio governance process starts when a business user requests or suggests a new capability. The request is automatically routed to a gatekeeper, then to a business analyst or team for an initial business case before being routed to the operations council and the architecture standards committee for review and scoring. The business council then evaluates the prioritized, ranked projects to determine the proper portfolio mix and whether to accept the recent request.

Included best-practice processes can be used out-of-the-box with minimal configuration, or you can configure the application to support your processes with an included graphical, drag-and-drop process modeler.

Provide IT Guidance to the Business

With Portfolio Management, the IT portfolio is aligned to support business strategy. As projects are proposed, business stakeholders help decide which projects are accepted and receive guidance on the status of projects as they are being delivered.



Portfolio Management what-if scenarios enable you to analyze your portfolio and assess the business contribution of each proposal, project, or application to the entire portfolio.

Model the Optimal Mix

Define unlimited “what if” scenarios, creating the optimal mix of projects, proposals, and assets. Model changes to dates, budgets, or resources to meet your goal – whether it be strategic alignment, benefit realization, capacity, skill availability, or a combination of these or other factors. See the impact of accelerating an important initiative, or sun-setting a low-value asset.

Portfolios are visible in real-time on the included Mercury IT Governance Dashboard, with the ability to “slice-and-dice” the portfolio by the attributes relevant to each stakeholder. Project data is available so authorized users can get a complete, clear picture of the IT portfolio or any individual request from anywhere with an Internet connection. It also automatically keeps an audit trail of all changes and approvals to comply with a range of regulatory requirements.

Portfolio Management helps you maximize the value of IT to stakeholders and your business. Estimated project benefits are projected as part of the project-initiation process, and project managers or sponsors can be required to reevaluate the estimates when the project changes. With multiple criteria to rank and rate

portfolio candidates – from net present value (NPV) and return on investment (ROI) to qualitative criteria, including supported business objective and technology risk – creating a strong IT portfolio becomes much easier. And, because the data is always current, you can reevaluate the portfolio without needing outside consultants to update the data.

Once a project is complete, the value of Portfolio Management doesn't end; actual benefits are collected as well. With this information, stakeholders compare actual benefits with estimates, enabling them to better manage the portfolio going forward.

How it Works

Portfolio Management provides the processes, entities, and analysis capabilities to manage your IT Portfolio. Quantitative information including financial budgets, resources, schedules, and others along with qualitative information, including strategic fit, alignment, complexity, and others, is collected to enable apples-to-apples comparisons across the portfolio. Digitized processes enforce when information is required, ensuring information is available and consistent across pending or proposed projects, active projects, and production applications.

And, instead of manual data entry or expensive integration, portfolio status flows seamlessly in real-time from our IT transaction system for both project information and “keep-the-lights-on” activities. CIOs and portfolio decision makers always see the portfolio's real-time status, and enjoy immediate access to detailed information on which to base decisions.

Part of Mercury IT Governance Center

Mercury Portfolio Management is part of Mercury IT Governance Center™, an integrated set of software, solutions, and best practices that provides the first integrated transaction system to run IT like a business.

FEATURES AND BENEFITS

- Real-time management: Captures real-time IT status automatically, so that accurate, up-to-date information is always available for difficult portfolio decisions.
- Enforced, automated processes: Governs the entire portfolio lifecycle from proposal initiation, justification, and review to project initiation, execution, deployment, and benefits realization.
- What-if scenario planning: Creates optimal mix of projects, proposals, and assets to meet organization goals by modeling unlimited scenarios.
- Improved IT guidance: Aligns your IT portfolio to support business strategy.



Mercury is the global leader in business technology optimization (BTO). We are committed to helping customers optimize the business value of IT. www.MERCURY.COM