

QAInspect

Security Throughout the Application Lifecycle

For Mercury Quality Center™ or TestDirector® ■ QuickTest Professional™ or WinRunner™ ■ Business Process Testing™



SPI Dynamics' Quality Assurance products enable QA professionals to incorporate fully automated Web application security testing into the overall test management process without the need for specialized security knowledge and without the risk of slowing aggressive product release schedules. Now, Mercury users can conduct and manage both functional testing and security testing from a single platform.

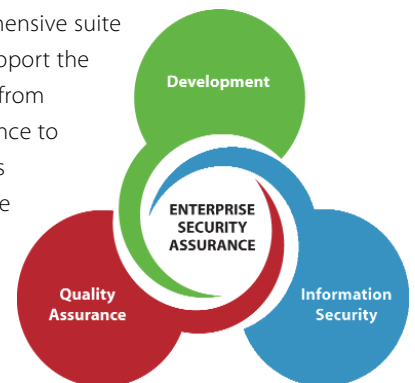
Standardizing Security as part of the Testing Process

With more than one million new Web applications being launched each month and successful hacker attacks in the news each week, application security is no longer an afterthought. More than ever before organizations realize that security must be a priority while applications are being developed.

QA professionals are learning that Web application security vulnerabilities must be treated like any other software defect. Organizations can save time and money by identifying and correcting these security defects early in the development process - before Web applications are deployed in production environments. But most QA professionals are not security experts and are looking for tools to help them identify and understand security defects.

A Lifecycle Approach

SPI Dynamics delivers a comprehensive suite of products and services that support the entire Web application lifecycle, from development and quality assurance to deployment, ongoing operations management and auditing. These security products meet a single, simple goal - bring security expertise to staff, without requiring new skills or specialized training. Trustworthy software becomes possible only when security becomes a standard requirement in the entire development process.



Start Secure. Stay Secure.™

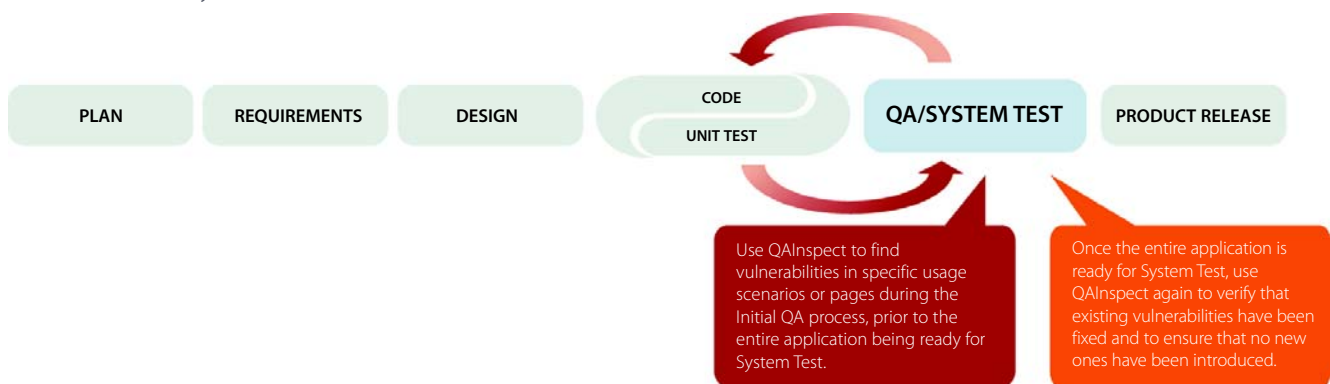
Security Assurance Throughout the Application Lifecycle

QAInspect - Comprehensive Security Test Management

QAInspect applies the most innovative techniques to identify security vulnerabilities from the hacker's perspective - from outside the application in. QAInspect reports on those vulnerabilities with detailed security knowledge in a way that Quality Assurance professionals can understand. QA professionals use QAInspect to analyze applications for a concise, prioritized list of vulnerabilities. Analysis results yield detailed information on the types of attacks possible, such as Cross-Site Scripting (XSS) or SQL Injection.

Security, a requirement in the testing process

Software Lifecycle



Tight integration with Mercury

QAInspect is tightly integrated with all Mercury functional testing products, allowing QA professionals to analyze Web applications within their existing testing framework.

■ Mercury Quality Center and TestDirector

QAInspect enables QA professionals to plan, execute and manage automated Web application security testing from within the familiar Quality Center or TestDirector platforms. This allows QA professionals to easily leverage existing Quality Center and Test Director features for their security tests.

■ Mercury WinRunner and QuickTest Professional

QAInspect for WinRunner and QuickTest Professional is the only security product today that provides users the ability to leverage existing functional test scripts to perform automated security analysis. QAInspect converts existing functional scripts and enables users to import these converted scripts into the security scan. Not only does this save time by eliminating the need to manually create security scripts, but QAInspect also reduces scan time and allows the user to focus on specific pages and process flows.

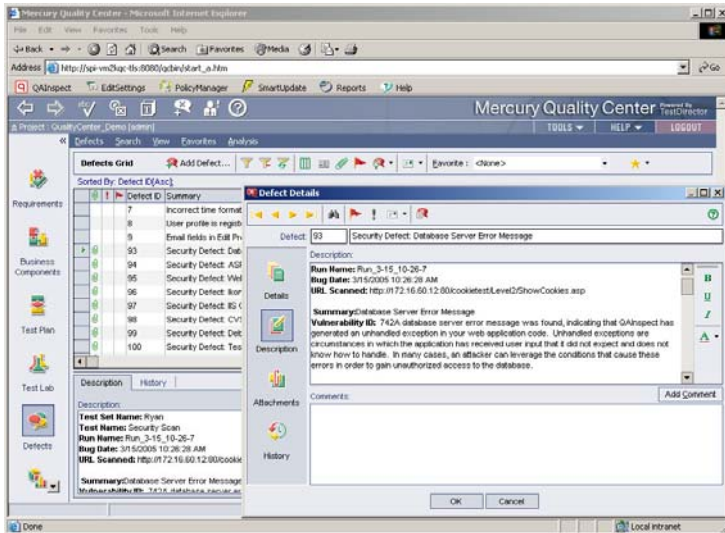
■ Mercury Business Process Testing

SPI Dynamics' Business Process Testing components for Mercury Quality Center enable QA professionals to quickly and easily add application security testing into their existing Test Plan. These pre-written components contain comprehensive automated security analysis. Now, the people who are most knowledgeable about the business process and the application functionality can quickly build comprehensive security tests without any security expertise. SPI Dynamics is the first and only company to provide a fully integrated BPT security accelerator for Mercury Quality Center.

QAInspect

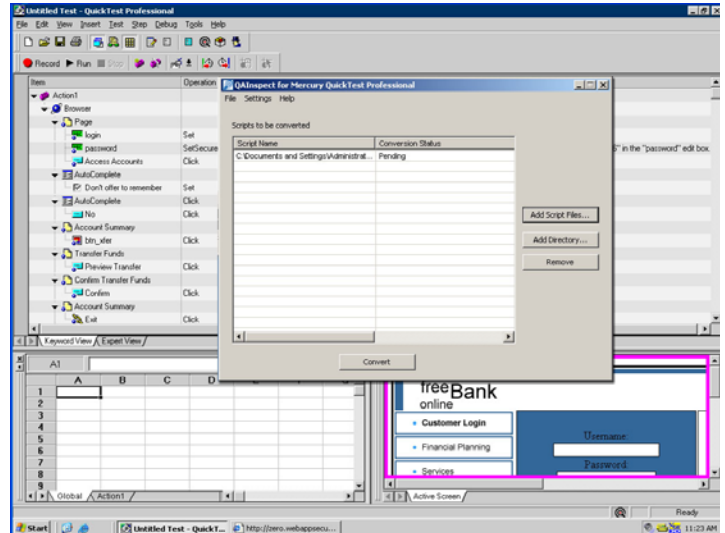
Application Security for Quality Assurance

QAInspect for Quality Center and TestDirector



QAInspect finds and prioritizes the security vulnerabilities in an entire Web application during testing and presents detailed information and remediation advice about each vulnerability, all within the Mercury Quality Center and TestDirector working environment.

QAInspect for WinRunner and QuickTest Professional



QAInspect for Mercury WinRunner and QuickTest Professional finds and prioritizes the security vulnerabilities in specific usage scenarios or pages of Web applications during testing and presents detailed information and remediation advice about each vulnerability, all within the Mercury QuickTest Professional and WinRunner working environment.

Overall Benefits

Secure, high-quality software: By incorporating security testing into the overall test management process, you can manage functional, and security testing from a single platform. This allows you to deliver quality applications on schedule at the lowest possible cost.

Ease of use: Only QAInspect completely integrates with Mercury's functional testing products to enable QA professionals to easily conduct and manage security testing in tandem with functional and performance testing.

Integrated defect reporting: Security defects are reported alongside functional defects in Mercury Quality Center and TestDirector Defect Management modules, allowing you to detect and eliminate security bugs during the development and QA phases of the application development lifecycle.

Concise prioritized vulnerabilities: All QAInspect products quickly find vulnerabilities and automatically prioritize them based on business risk.

Security expert knowledgebase: SPI Dynamics is recognized as the leading web application security company. Our security experts at SPI Labs find and capture all known security vulnerabilities and build that expertise directly into SecureBase, the leading knowledgebase of security vulnerabilities and best practices for fixing them.

Comprehensive vulnerability reporting: All versions have comprehensive reports that provide detailed descriptions of security defects including: the potential business impact if the security defect is exploited, its possible severity, remediation information necessary to resolve the defect, and references for additional research.

Supports regulatory compliance efforts: Both products can be used to track and report progress on security compliance for regulations like Sarbanes Oxley and HIPAA.

QAInspect

Application Security for Quality Assurance

System Requirements

Server Requirements:

(For Quality Center and TestDirector Versions)

- 512 MB of memory
- 150 MB of free disk space
- An active Internet connection
- Pentium III processor or higher
- Microsoft Server 2000 SP4 or Microsoft Server 2003
- Microsoft Internet Explorer 6.0.
- Microsoft Data Access Components (MDAC) 2.7 or higher
- Mercury Quality Center 8.0/8.2 or TestDirector 8.0

Client Requirements:

(For All Versions)

- 256 MB of memory
- 150 MB of free disk space
- An active Internet connection
- Pentium III processor or higher
- Microsoft Windows 2000 SP4 or or Windows XP SP2
- Microsoft Internet Explorer 6.0.
- Microsoft Data Access Components (MDAC) 2.7 or higher

“The growing complexity of web application development and the increased focus on application security has created the need for an integrated security testing solution that spans the entire application lifecycle. Providing a platform to assist QA testing teams during the security defect removal process and before applications reach production, offers significant ROI for our organization.”

Edward Liebig

Chief Information Security Officer
Manulife USA

About SPI Dynamics

SPI Dynamics' software helps organizations build and maintain secure Web applications. The company's products promote collaboration among developers, quality assurance testers and security specialists and empower organizations to start secure and stay secure throughout the application development lifecycle. SPI Dynamics' internal research and development group, SPI Labs, is recognized as the unequivocal authority on Web application security. For more information, visit www.spidynamics.com or call (678) 781-4800.



Mercury Technology Alliance Partner of the Year 2004 – Mercury Interactive Corporation, awarded SPI Dynamics with its Technology Alliance Partner of the Year honors for 2004. The Partner of the Year Award recognizes the alliance partner that has developed and delivered the most innovative and highest impact technology integrations with Mercury solutions. SPI Dynamics was chosen as the Partner of the Year out of an active base of 45 partners in the Mercury Technology Alliance Program.